



Joel Fahland	joelf@eefoods.com	(206) 493-6594
Josh Watts	joshw@eefoods.com	(206) 493-2871
Kenny Luu	kennyl@eefoods.com	(206) 812-3360
Marc Taylor	marct@eefoods.com	(206) 812-3357
Mark Fouty	markf@eefoods.com	(206) 812-2826
Noi Chutong	noic@eefoods.com	(206) 493-2844
Randy Patrick	randyp@eefoods.com	(206) 812-2834
Sara Daniels	saraD@eefoods.com	(206) 812-2832

FROZEN SOCKEYE SALMON #1

Size	Pack	Product	Location	Price/lb.	Lb. Avl.
0.7-1 LB	30#	Sockeye Fillets	SEA	CALL	
4,6, 8 OZ	Tote	Portion PBO	SEA	CALL	
2/4 & 4/6	Tote	Sockeye H&G	SEA	CALL	
10 lb	Tote	Sockeye meat SKLS BNLS F-ON VP	SEA	CALL	
10/3# & 16/3#	30#/ 48#	Sockeye Scraped meat VP	SEA	\$4.75	
5/3 KG	33#	Sockeye Mince VP	SEA	\$1.65	

FROZEN COHO SALMON YAKUTAT 2018

Size	Pack	Product	Location	Price/lb.	Lb. Avl.
2/4 & 4/6	Tote	YKT Net H&G #2	SEA	CALL	

FROZEN CHUM SALMON 66 NORTH

Size	Pack	Product	Location	Price/lb.	Lb. Avl.
4/6	Tote/50#	Kotz Chum H&G	SEA	\$2.35/ \$2.55	
6/9	Tote/50#	Kotz Chum H&G	SEA	\$2.55/ \$2.75	
6/5 lb	30#	Chum Mince VP	SEA	\$1.30	

Call us for Refresh Kotz Chum Fillets

FROZEN EULACHON (SMELT)

Size	Pack	Product	Location	Price/lb.	Lb. Avl.
OR	1x50#	Round	SEA, NJ	\$1.40	CALL

2018 Season WILD PACIFIC COD #1 Alaska (Single Frozen) IQF

Product	Location	Product	Pack	IQF	Lb. Avl.
4/8 OZ	SEA	PBO Fillet #1	20#	\$4.40	CALL
8/16 OZ	SEA	PBO Fillet #1	20#	\$4.50	CALL
16/32 OZ	SEA	PBO Fillet #1	20#	\$4.65	CALL

2019 Shatter Pack WILD PACIFIC COD #1 Alaska

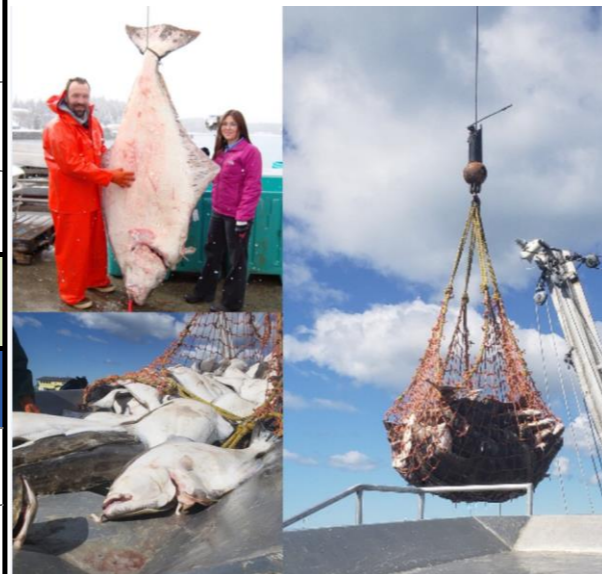
Product	Location	Product	Pack	IQF	Lb. Avl.
4/8 OZ	SEA	PBO Fillet #1	45#	\$4.30	CALL
8/16 OZ	SEA	PBO Fillet #1	45#	\$4.40	CALL
16/32 OZ	SEA	PBO Fillet #1	45#	\$4.50	CALL
32/ Up	SEA	PBO Fillet #1	45#	\$4.60	CALL

FROZEN BLACK COD #1 Alaska 2018 Season

Product	Pack	Product	Location	Price/lb.	Lb. Avl.
2/3	50#	FZ H&G #1	SEA	\$5.75	CALL
5/7	50#	FZ H&G #1	SEA	\$10.30	CALL
7/UP	50#	FZ H&G #1	SEA	\$11.30	CALL

FROZEN HALIBUT #1 Alaska 2018

Product	Pack	Product	Location	Price/lb.	Lb. Avl.
60/UP	Tote	FZ H&G #1	SEA	\$6.85	CALL
80/UP	Tote	FZ H&G #1	SEA	\$6.85	CALL



FRESH PACIFIC COD #1 Alaska
Ask us about fresh Pacific Cod- New Season 2019!
MSC Certified

H/G (Collar Off)	MSC Certified	CALL
PBI or PBO	Pack: 60 lb Master case	CALL
H&G	6 x 10lb bags	CALL



FRESH ATLANTIC SALMON #1 ASC
Please call , New shipment weekly

Size	Pack	Product	Location	Price/lb.	Lb. Avl.
4/5-7/8 KG	55#	Head-On	Miami/LA		CALL
6,8 OZ	10#	Portion Skin-On/Off	Miami/LA		CALL
2/3-3/4	35#/ 10#	Fillets PBO D trim	Miami/LA		CALL

FRESH ATLANTIC SALMON #1 (Chile, Norway, Scotland)

Size	Pack	Product	Location	Price/lb.	Lb. Avl.
1/2	35#/ 10#	Fillets PBO D trim	Miami/LA		CALL
2/3	35#/ 10#	Fillets PBO D trim	Miami/LA		CALL
3/4	35#/ 10#	Fillets PBO D trim	Miami/LA		CALL
4/5	35#/ 10#	Fillets PBO D trim	Miami/ LA		CALL

FRESH ATLANTIC SALMON #1 (USA, Canada)

Size	Pack	Product	Location	Price/lb.	Lb. Avl.
6/8- 12/14	55#	Head-On	SEA/LA		
2/3-3/4	35#/ 10#	Fillets PBO D trim	SEA/LA		



Call for container quotes for #1 IVP Fillets from Chile

FROZEN ATLANTIC SALMON #1 (Chile)

Size	Pack	Product	Location	Price/lb.	Lb. Avl.
1/2	10KG	Fillets D Trim PBO IVP	LA		CALL
3/4	10KG	Fillets D Trim PBO IVP	LA		CALL

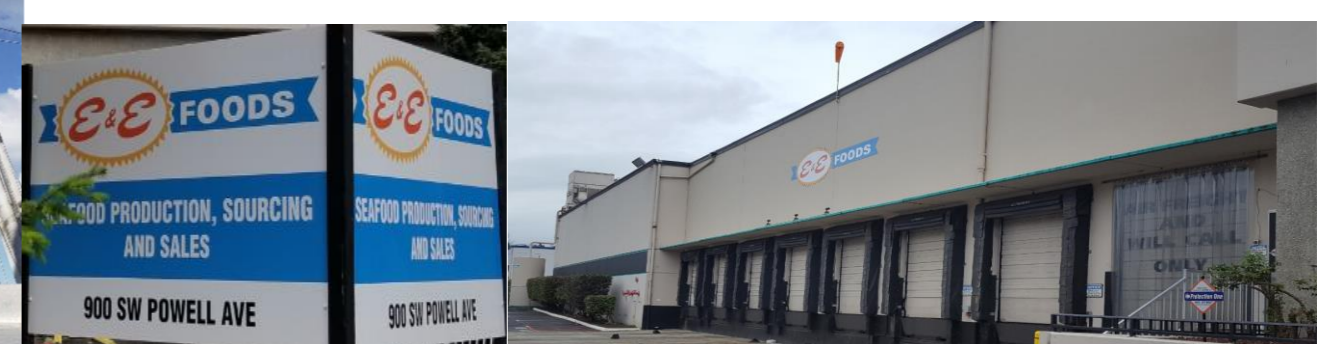
FROZEN ATLANTIC SALMON #1 (USA, Chile)

Size	Pack	Product	Location	Price/lb.	Lb. Avl.
1/2	30#	Fillets D Trim PBO IVP	SEA		CALL
2/3	30#	Fillets D Trim PBO IVP	SEA		CALL
3/4	30#	Fillets D Trim PBO IVP	SEA		CALL
4/5	30#	Fillets D Trim PBO IVP	SEA		CALL

FROZEN ATLANTIC SALMON PORTIONS SKIN OFF

Size	Pack	Product	Location	Price/lb.	Lb. Avl.
6, 7, 8OZ	10#	PBO IVP Ctr Cut Portions Natural	MIA/LA		CALL

We've moved to our new home! Come see us!



Prices and availability subject to change without notice
Please Note: Toted Product can be boxed for additional charge

900 Powell Ave., SW., Renton WA 98057
www.eefoods.com

*Inspection photos available upon request
*Denotes incoming product